

Product Information

Size:

50ul

Reactivity:

Human, Mouse, Rat

Source:

Rabbit

Isotype:

IgG

Applications:

ELISA, WB, IHC

Recommended dilutions:

ELISA:1:2000-1:5000, WB:1:500-1:2000,
IHC:1:25-1:100

Protein Background:

Ras-related GTP-binding protein A is a protein that in humans is encoded by the RRAGA gene. Guanine nucleotide-binding protein forming heterodimeric Rag complexes required for the amino acid, induced relocalization of mTORC1 to the lysosomes and its subsequent activation by the GTPase RHEB. This is a crucial step in the activation of the TOR signaling cascade by amino acid, . Involved in the RCC1/Ran-GTPase pathway. May play a direct role in a TNF-alpha signaling pathway leading to induction of cell death.

Gene ID:

RRAGA

Uniprot

Q7L523

Synonyms:

Ras-related GTP binding A

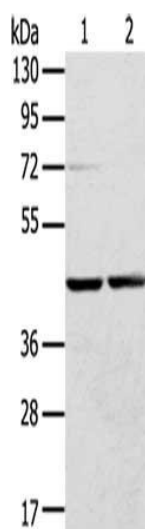
Immunogen:

Fusion protein of human RRAGA.

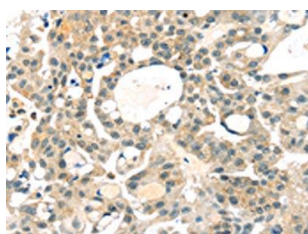
Storage:

-20°C, pH7.4 PBS, 0.05% NaN3, 40% Glycerol

Product Images



Gel: 8%SDS-PAGE, Lysate: 40 μ g, Lane 1-2: Hepg2 cells, hela cells, Primary antibody: PACO17025(RRAGA Antibody) at dilution 1/400, Secondary antibody: Goat anti rabbit IgG at 1/8000 dilution, Exposure time: 3 seconds.



The image on the left is immunohistochemistry of paraffin-embedded Human breast cancer tissue using PACO17025(RRAGA Antibody) at dilution 1/25, on the right is treated with fusion protein. (Original magnification: x—200).