

S100A11 Antibody



PACO17032

Product Information

Size:

50ul

Reactivity:

Human, Mouse, Rat

Source:

Rabbit

Isotype:

IgG

Applications:

ELISA, WB, IHC

Recommended dilutions:

ELISA:1:2000-1:10000, WB:1:1000-1:5000,
IHC:1:25-1:100

Protein Background:

The protein encoded by this gene is a member of the S100 family of proteins containing 2 EF-hand calcium-binding motifs. S100 proteins are localized in the cytoplasm and/or nucleus of a wide range of cells, and involved in the regulation of a number of cellular processes such as cell cycle progression and differentiation. S100 genes include at least 13 members which are located as a cluster on chromosome 1q21. This protein may function in motility, invasion, and tubulin polymerization.

Gene ID:

S100A11

Uniprot

P31949

Synonyms:

S100 calcium binding protein A11

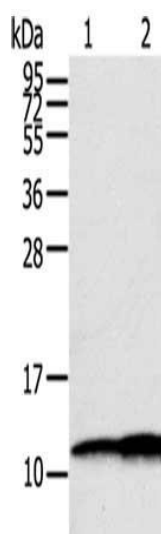
Immunogen:

Fusion protein of human S100A11.

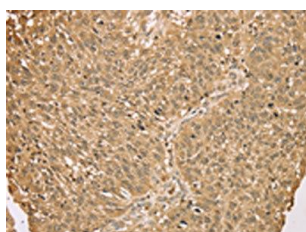
Storage:

-20° C, pH7.4 PBS, 0.05% NaN3, 40% Glycerol

Product Images



Gel: 12%SDS-PAGE, Lysate: 40 μ g, Lane 1-2: Hepg2 cells, A549 cells, Primary antibody: PACO17032(S100A11 Antibody) at dilution 1/600, Secondary antibody: Goat anti rabbit IgG at 1/8000 dilution, Exposure time: 1 seconds.



The image on the left is immunohistochemistry of paraffin-embedded Human lung cancer tissue using PACO17032(S100A11 Antibody) at dilution 1/25, on the right is treated with fusion protein. (Original magnification: x—200).