

S100PBP Antibody



PACO17041

Product Information

Size:

50ul

Reactivity:

Human

Source:

Rabbit

Isotype:

IgG

Applications:

ELISA, WB

Recommended dilutions:

ELISA:1:1000-1:2000, WB:1:200-1:1000

Protein Background:

This gene encodes a protein that was originally identified by its interaction with S100 calcium-binding protein P. Expression of this protein has been reported to be associated with pancreatic ductal adenocarcinoma. Alternatively spliced transcript variants have been described.

Gene ID:

S100PBP

Uniprot

Q96BU1

Synonyms:

S100P binding protein

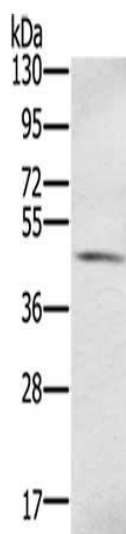
Immunogen:

Fusion protein of human S100PBP.

Storage:

-20° C, pH7.4 PBS, 0.05% NaN₃, 40% Glycerol

Product Images



Gel: 8%SDS-PAGE, Lysate: 40 μ g, Lane: Human fetal brain tissue, Primary antibody: PACO17041(S100PBP Antibody) at dilution 1/350, Secondary antibody: Goat anti rabbit IgG at 1/8000 dilution, Exposure time: 1 minute.