

SAMD7 Antibody



PACO17046

Product Information

Size:

50ul

Reactivity:

Human

Source:

Rabbit

Isotype:

IgG

Applications:

ELISA, IHC

Recommended dilutions:

ELISA:1:2000-1:5000, IHC:1:25-1:100

Protein Background:

SAMD7 (Sterile alpha motif domain-containing protein 7), is a 446 amino acid, protein encoded by the SAMD7 gene which maps to human chromosome 3. Chromosome 3 is made up of about 214 million bases encoding over 1,100 genes, including a chemokine receptor (CKR) gene cluster and a variety of human cancer-related gene loci. Key tumor suppressing genes on chromosome 3 include those that encode the apoptosis mediator RASSF1, the cell migration regulator HYAL1 and the angiogenesis suppressor SEMA3B.

Gene ID:

SAMD7

Uniprot

Q7Z3H4

Synonyms:

sterile alpha motif domain containing 7

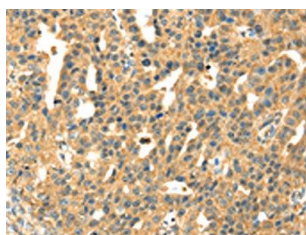
Immunogen:

Fusion protein of human SAMD7.

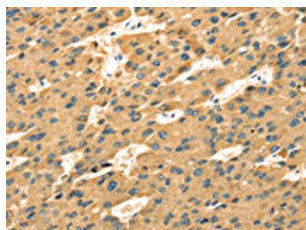
Storage:

-20°C; C, pH7.4 PBS, 0.05% NaN3, 40% Glycerol

Product Images



The image on the left is immunohistochemistry of paraffin-embedded Human breast cancer tissue using PACO17046(SAMD7 Antibody) at dilution 1/35, on the right is treated with fusion protein. (Original magnification: x—200).



The image on the left is immunohistochemistry of paraffin-embedded Human liver cancer tissue using PACO17046(SAMD7 Antibody) at dilution 1/35, on the right is treated with fusion protein. (Original magnification: x—200).