

# SAMD7 Antibody



PACO17047

---

## Product Information

**Size:**

50ul

**Reactivity:**

Human

**Source:**

Rabbit

**Isotype:**

IgG

**Applications:**

ELISA, IHC

**Recommended dilutions:**

ELISA:1:2000-1:5000, IHC:1:25-1:100

**Protein Background:**

SAMD7 (Sterile alpha motif domain-containing protein 7), is a 446 amino acid, protein encoded by the SAMD7 gene which maps to human chromosome 3. Chromosome 3 is made up of about 214 million bases encoding over 1,100 genes, including a chemokine receptor (CKR) gene cluster and a variety of human cancer-related gene loci. Key tumor suppressing genes on chromosome 3 include those that encode the apoptosis mediator RASSF1, the cell migration regulator HYAL1 and the angiogenesis suppressor SEMA3B.

**Gene ID:**

SAMD7

**Uniprot**

Q7Z3H4

**Synonyms:**

sterile alpha motif domain containing 7

**Immunogen:**

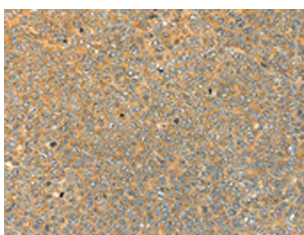
Fusion protein of human SAMD7.

**Storage:**

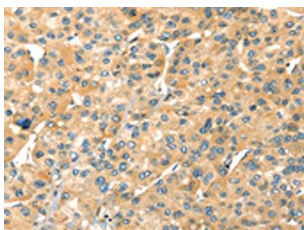
-20&deg; C, pH7.4 PBS, 0.05% NaN3, 40% Glycerol

## Product Images

---



The image on the left is immunohistochemistry of paraffin-embedded Human ovarian cancer tissue using PACO17047(SAMD7 Antibody) at dilution 1/20, on the right is treated with fusion protein. (Original magnification: x—200).



The image on the left is immunohistochemistry of paraffin-embedded Human liver cancer tissue using PACO17047(SAMD7 Antibody) at dilution 1/20, on the right is treated with fusion protein. (Original magnification: x—200).