

PACO17050

---

## Product Information

**Size:**

50ul

**Reactivity:**

Human, Mouse, Rat

**Source:**

Rabbit

**Isotype:**

IgG

**Applications:**

ELISA, IHC

**Recommended dilutions:**

ELISA:1:2000-1:5000, IHC:1:25-1:100

**Protein Background:**

This gene encodes a protein with a sterol sensing domain (SSD) and seven WD domains. In the presence of cholesterol, this protein binds to sterol regulatory element binding proteins (SREBPs) and mediates their transport from the ER to the Golgi. The SREBPs are then proteolytically cleaved and regulate sterol biosynthesis.

**Gene ID:**

SCAP

**Uniprot**

Q12770

**Synonyms:**

SREBF chaperone

**Immunogen:**

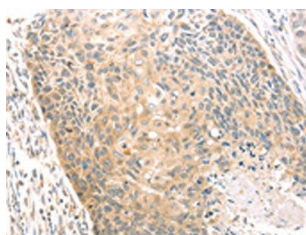
Fusion protein of human SCAP.

**Storage:**

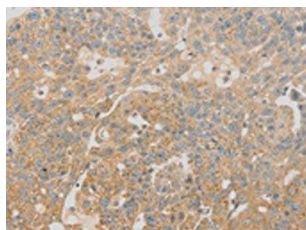
-20&deg; C, pH7.4 PBS, 0.05% NaN<sub>3</sub>, 40% Glycerol

## Product Images

---



The image on the left is immunohistochemistry of paraffin-embedded Human esophagus cancer tissue using PACO17050(SCAP Antibody) at dilution 1/20, on the right is treated with fusion protein. (Original magnification: x—200).



The image on the left is immunohistochemistry of paraffin-embedded Human breast cancer tissue using PACO17050(SCAP Antibody) at dilution 1/20, on the right is treated with fusion protein. (Original magnification: x—200).