

SERPINA12 Antibody



PACO17076

Product Information

Size:

50ul

Reactivity:

Human

Source:

Rabbit

Isotype:

IgG

Applications:

ELISA, IHC

Recommended dilutions:

ELISA:1:2000-1:5000, IHC:1:25-1:100

Protein Background:

Adipokine that modulates insulin action by specifically inhibiting its target protease KLK7 in white adipose tissues.

Gene ID:

SERPINA12

Uniprot

Q8IW75

Synonyms:

serpin peptidase inhibitor, clade A (alpha-1 antiproteinase, antitrypsin), member 12

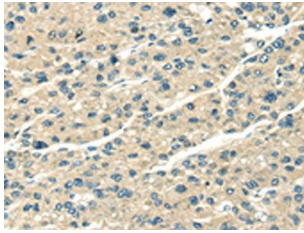
Immunogen:

Fusion protein of human SERPINA12.

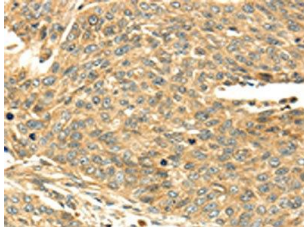
Storage:

-20° C, pH7.4 PBS, 0.05% NaN3, 40% Glycerol

Product Images



The image on the left is immunohistochemistry of paraffin-embedded Human liver cancer tissue using PACO17076(SERPINA12 Antibody) at dilution 1/40, on the right is treated with fusion protein. (Original magnification: x—200).



The image on the left is immunohistochemistry of paraffin-embedded Human lung cancer tissue using PACO17076(SERPINA12 Antibody) at dilution 1/40, on the right is treated with fusion protein. (Original magnification: x—200).