

# SH3KBP1 Antibody



PACO17088

---

## Product Information

**Size:**

50ul

**Reactivity:**

Human, Mouse, Rat

**Source:**

Rabbit

**Isotype:**

IgG

**Applications:**

ELISA, WB, IHC

**Recommended dilutions:**

ELISA:1:2000-1:5000, WB:1:500-1:2000,  
IHC:1:30-1:150

**Protein Background:**

This gene encodes an adapter protein that contains three N-terminal Src homology domains, a proline rich region and a C-terminal coiled-coil domain. The encoded protein facilitates protein-protein interactions and has been implicated in numerous cellular processes including apoptosis, cytoskeletal rearrangement, cell adhesion and in the regulation of clathrin-dependent endocytosis. Alternate splicing results in multiple transcript variants.

**Gene ID:**

SH3KBP1

**Uniprot**

Q96B97

**Synonyms:**

SH3-domain kinase binding protein 1

**Immunogen:**

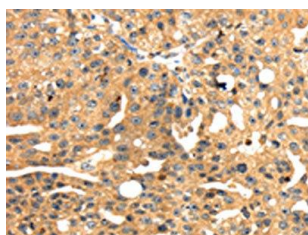
Fusion protein of human SH3KBP1.

**Storage:**

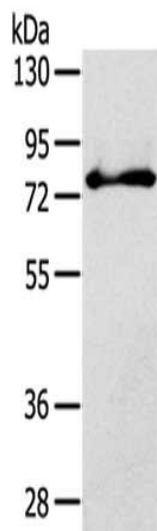
-20&deg; C, pH7.4 PBS, 0.05% NaN<sub>3</sub>, 40% Glycerol

## Product Images

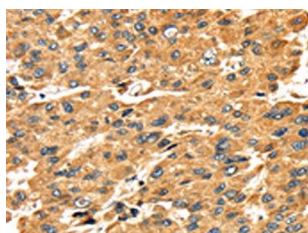
---



The image on the left is immunohistochemistry of paraffin-embedded Human breast cancer tissue using PACO17088(SH3KBP1 Antibody) at dilution 1/45, on the right is treated with fusion protein. (Original magnification: x—200).



Gel: 8%SDS-PAGE, Lysate: 40  $\mu$ g, Primary antibody: PACO17088(SH3KBP1 Antibody) at dilution 1/800 dilution, Secondary antibody: Goat anti rabbit IgG at 1/8000 dilution, Exposure time: 30 seconds.



The image on the left is immunohistochemistry of paraffin-embedded Human liver cancer tissue using PACO17088(SH3KBP1 Antibody) at dilution 1/45, on the right is treated with fusion protein. (Original magnification: x—200).