

# SLC25A26 Antibody



PACO17105

---

## Product Information

**Size:**

50ul

**Reactivity:**

Human, Mouse

**Source:**

Rabbit

**Isotype:**

IgG

**Applications:**

ELISA, IHC

**Recommended dilutions:**

ELISA:1:2000-1:5000, IHC:1:25-1:100

**Protein Background:**

Mitochondrial carriers, including SLC25A26, are a family of transport proteins found mostly in the inner membranes of mitochondria. They shuttle metabolites and cofactors through the mitochondrial membrane.

**Gene ID:**

SLC25A26

**Uniprot**

Q70HW3

**Synonyms:**

solute carrier family 25 (S-adenosylmethionine carrier), member 26

**Immunogen:**

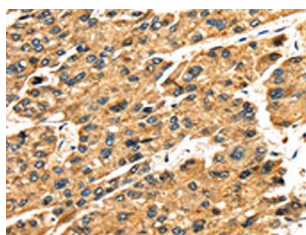
Fusion protein of human SLC25A26.

**Storage:**

-20&deg; C, pH7.4 PBS, 0.05% NaN<sub>3</sub>, 40% Glycerol

## Product Images

---



The image on the left is immunohistochemistry of paraffin-embedded Human liver cancer tissue using PACO17105(SLC25A26 Antibody) at dilution 1/30, on the right is treated with fusion protein. (Original magnification: x—200).