

SLC25A26 Antibody



PACO17106

Product Information

Size:

50ul

Reactivity:

Human, Mouse

Source:

Rabbit

Isotype:

IgG

Applications:

ELISA, IHC

Recommended dilutions:

ELISA:1:2000-1:5000, IHC:1:25-1:100

Protein Background:

Mitochondrial carriers, including SLC25A26, are a family of transport proteins found mostly in the inner membranes of mitochondria. They shuttle metabolites and cofactors through the mitochondrial membrane.

Gene ID:

SLC25A26

Uniprot

Q70HW3

Synonyms:

solute carrier family 25 (S-adenosylmethionine carrier), member 26

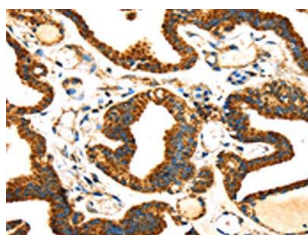
Immunogen:

Fusion protein of human SLC25A26.

Storage:

-20° C, pH7.4 PBS, 0.05% NaN₃, 40% Glycerol

Product Images



The image on the left is immunohistochemistry of paraffin-embedded Human thyroid cancer tissue using PACO17106(SLC25A26 Antibody) at dilution 1/30, on the right is treated with fusion protein. (Original magnification: x—200).