

Product Information

Size:

50ul

Reactivity:

Human

Source:

Rabbit

Isotype:

IgG

Applications:

ELISA, IHC

Recommended dilutions:

ELISA:1:2000-1:5000, IHC:1:20-1:100

Protein Background:

Located between the protocadherin beta and gamma gene clusters on chromosome 5, this intronless gene encodes a protein that is highly similar to an ornithine transporter localized in the mitochondrial inner membrane. The encoded protein most likely plays a role in metabolism as a mitochondrial transport protein.

Gene ID:

SLC25A2

Uniprot

Q9BXI2

Synonyms:

solute carrier family 25 (mitochondrial carrier; ornithine transporter) member 2

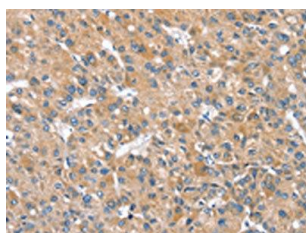
Immunogen:

Fusion protein of human SLC25A2.

Storage:

-20° C, pH7.4 PBS, 0.05% NaN₃, 40% Glycerol

Product Images



The image on the left is immunohistochemistry of paraffin-embedded Human liver cancer tissue using PACO17107(SLC25A2 Antibody) at dilution 1/20, on the right is treated with fusion protein. (Original magnification: x—200).