

SSBP1 Antibody



PACO17150

Product Information

Size:

50ul

Reactivity:

Human, Mouse, Rat

Source:

Rabbit

Isotype:

IgG

Applications:

ELISA, IHC

Recommended dilutions:

ELISA:1:2000-1:5000, IHC:1:25-1:100

Protein Background:

SSBP1 is a housekeeping gene involved in mitochondrial biogenesis (Tiranti et al. , 1995). It is also a subunit of a single-stranded DNA (ssDNA)-binding complex involved in the maintenance of genome stability.

Gene ID:

SSBP1

Uniprot

Q04837

Synonyms:

single-stranded DNA binding protein 1, mitochondrial

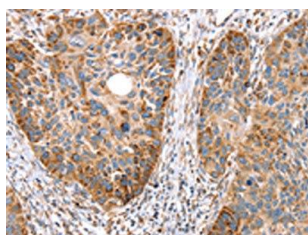
Immunogen:

Fusion protein of human SSBP1.

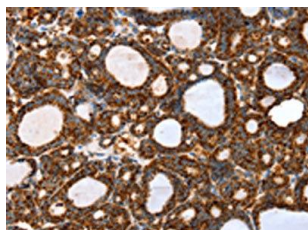
Storage:

-20° C, pH7.4 PBS, 0.05% NaN₃, 40% Glycerol

Product Images



The image on the left is immunohistochemistry of paraffin-embedded Human esophagus cancer tissue using PACO17150(SSBP1 Antibody) at dilution 1/20, on the right is treated with fusion protein. (Original magnification: x—200).



The image on the left is immunohistochemistry of paraffin-embedded Human thyroid cancer tissue using PACO17150(SSBP1 Antibody) at dilution 1/20, on the right is treated with fusion protein. (Original magnification: x—200).