

### Product Information

**Size:**

50ul

**Reactivity:**

Human, Mouse, Rat

**Source:**

Rabbit

**Isotype:**

IgG

**Applications:**

ELISA, WB, IHC

**Recommended dilutions:**

ELISA:1:2000-1:5000, WB:1:500-1:2000,  
IHC:1:25-1:100

**Protein Background:**

SSBP1 is a housekeeping gene involved in mitochondrial biogenesis (Tiranti et al. , 1995 ). It is also a subunit of a single-stranded DNA (ssDNA)-binding complex involved in the maintenance of genome stability.

**Gene ID:**

SSBP1

**Uniprot**

Q04837

**Synonyms:**

single-stranded DNA binding protein 1, mitochondrial

**Immunogen:**

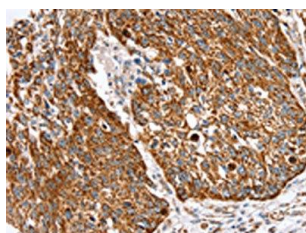
Fusion protein of human SSBP1.

**Storage:**

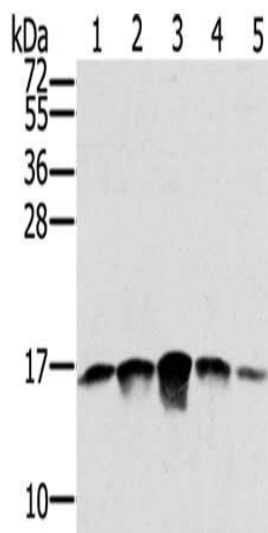
-20&deg; C, pH7.4 PBS, 0.05% NaN<sub>3</sub>, 40% Glycerol

## Product Images

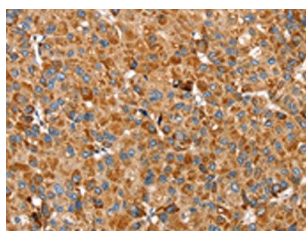
---



The image on the left is immunohistochemistry of paraffin-embedded Human lung cancer tissue using PACO17151(SSBP1 Antibody) at dilution 1/30, on the right is treated with fusion protein. (Original magnification: x—200).



Gel: 12%SDS-PAGE, Lysate: 40 &mu; g, Lane 1-5: PC3 cells, A549 cells, K562 cells, A375 cells, hela cells, Primary antibody: PACO17151(SSBP1 Antibody) at dilution 1/400, Secondary antibody: Goat anti rabbit IgG at 1/8000 dilution, Exposure time: 1 minute.



The image on the left is immunohistochemistry of paraffin-embedded Human liver cancer tissue using PACO17151(SSBP1 Antibody) at dilution 1/30, on the right is treated with fusion protein. (Original magnification: x—200).