

# THSD1 Antibody



PACO17239

---

## Product Information

**Size:**

50ul

**Reactivity:**

Human, Mouse

**Source:**

Rabbit

**Isotype:**

IgG

**Applications:**

ELISA, IHC

**Recommended dilutions:**

ELISA:1:2000-1:5000, IHC:1:25-1:100

**Protein Background:**

The protein encoded by this gene contains a type 1 thrombospondin domain, which is found in a number of proteins involved in the complement pathway, as well as in extracellular matrix proteins. Alternatively spliced transcript variants encoding different isoforms have been observed for this gene.

**Gene ID:**

THSD1

**Uniprot**

Q9NS62

**Synonyms:**

thrombospondin, type I, domain containing 1

**Immunogen:**

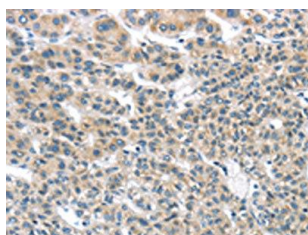
Fusion protein of human THSD1.

**Storage:**

-20&deg; C, pH7.4 PBS, 0.05% NaN<sub>3</sub>, 40% Glycerol

## Product Images

---



The image on the left is immunohistochemistry of paraffin-embedded Human liver cancer tissue using PACO17239(THSD1 Antibody) at dilution 1/25, on the right is treated with fusion protein. (Original magnification: x—200).