

Product Information

Size:

50ul

Reactivity:

Human, Mouse, Rat

Source:

Rabbit

Isotype:

IgG

Applications:

ELISA, IHC

Recommended dilutions:

ELISA:1:2000-1:5000, IHC:1:25-1:100

Protein Background:

Prothymosin alpha (PTMA) is a nuclear protein possessing a number of cellular functions including cell survival. PTMA is identified to be localized in the nuclei of neurons, while it is found in both nuclei and cytoplasm in the astrocytes and microglia of adult brain. PTMA inhibits the neuronal necrosis induced by serum-free starvation or ischemia-reperfusion stress, which causes a rapid internalization of GLUT1/4, leading to a decrease in glucose uptake and cellular ATP levels. Extensive research on PTMA showed that it is of clinical significance and potential medical use as they may serve as a molecular marker for cancer prognosis and/or as therapeutic agents for treating immunodeficiencies, autoimmune diseases and malignancies.

Gene ID:

PTMA

Uniprot

P06454

Synonyms:

prothymosin, alpha

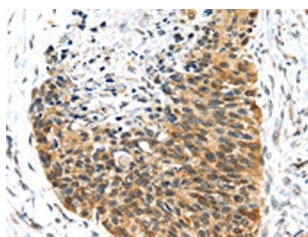
Immunogen:

Full length fusion protein.

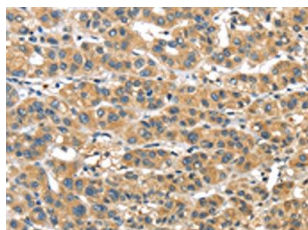
Storage:

-20°C, pH7.4 PBS, 0.05% NaN₃, 40% Glycerol

Product Images



The image on the left is immunohistochemistry of paraffin-embedded Human esophagus cancer tissue using PACO17243(PTMA Antibody) at dilution 1/30, on the right is treated with fusion protein. (Original magnification: x—200).



The image on the left is immunohistochemistry of paraffin-embedded Human liver cancer tissue using PACO17243(PTMA Antibody) at dilution 1/30, on the right is treated with fusion protein. (Original magnification: x—200).