

TMPRSS13 Antibody



PACO17278

Product Information

Size:

50ul

Reactivity:

Human, Mouse

Source:

Rabbit

Isotype:

IgG

Applications:

ELISA, IHC

Recommended dilutions:

ELISA:1:2000-1:5000, IHC:1:25-1:100

Protein Background:

This gene encodes a member of the type II transmembrane serine protease family. Transmembrane serine proteases are regulated by protease inhibitors and known to function in development, homeostasis, infection, and tumorigenesis. Multiple transcript variants encoding different isoforms have been found for this gene.

Gene ID:

TMPRSS13

Uniprot

Q9BYE2

Synonyms:

transmembrane protease, serine 13

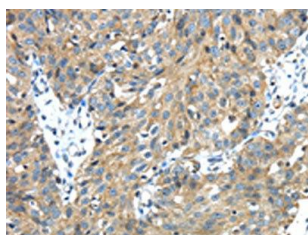
Immunogen:

Fusion protein of human TMPRSS13.

Storage:

-20° C, pH7.4 PBS, 0.05% NaN₃, 40% Glycerol

Product Images



The image on the left is immunohistochemistry of paraffin-embedded Human breast cancer tissue using PACO17278(TMPRSS13 Antibody) at dilution 1/30, on the right is treated with fusion protein. (Original magnification: x—200).