

Product Information

Size:

50ul

Reactivity:

Human, Mouse

Source:

Rabbit

Isotype:

IgG

Applications:

ELISA, IHC

Recommended dilutions:

ELISA:1:2000-1:10000, IHC:1:30-1:150

Protein Background:

This gene is a member of the zyxin family and encodes a protein with three LIM zinc-binding domains. This protein localizes to focal adhesion sites and along actin stress fibers. Recruitment of this protein to the plasma membrane occurs in a lysophosphatidic acid, (LPA)-dependent manner and it regulates LPA-induced cell migration. Alternatively spliced variants which encode different protein isoforms have been described; however, not all variants have been fully characterized.

Gene ID:

TRIP6

Uniprot

Q15654

Synonyms:

thyroid hormone receptor interactor 6

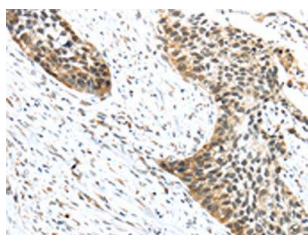
Immunogen:

Fusion protein of human TRIP6.

Storage:

-20°C; C, pH7.4 PBS, 0.05% NaN3, 40% Glycerol

Product Images



The image on the left is immunohistochemistry of paraffin-embedded Human esophagus cancer tissue using PACO17320(TRIP6 Antibody) at dilution 1/50, on the right is treated with fusion protein. (Original magnification: x—200).