

Product Information

Size:

50ul

Reactivity:

Human, Mouse, Rat

Source:

Rabbit

Isotype:

IgG

Applications:

ELISA, WB, IHC

Recommended dilutions:

ELISA:1:1000-1:2000, WB:1:200-1:1000,
IHC:1:25-1:100

Protein Background:

This gene encodes a serine/threonine phosphatase which is a member of the protein phosphatase catalytic subunit family. Proteins in this family participate in pathways regulated by reversible phosphorylation at serine and threonine residues; many of these pathways are involved in the regulation of cell growth and differentiation. The product of this gene has been shown to participate in signaling pathways in response to hormones or cellular stress, and elevated levels of this protein may be associated with breast cancer development.

Gene ID:

PPP5C

Uniprot

P53041

Synonyms:

protein phosphatase 5, catalytic subunit

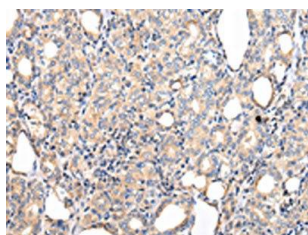
Immunogen:

Fusion protein of human PPP5C.

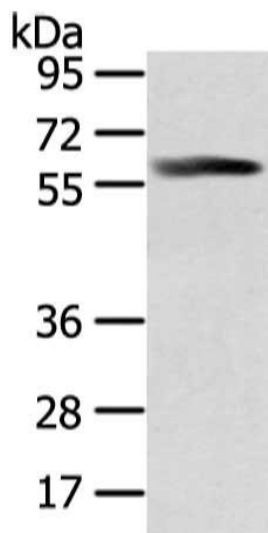
Storage:

-20° C, pH7.4 PBS, 0.05% NaN3, 40% Glycerol

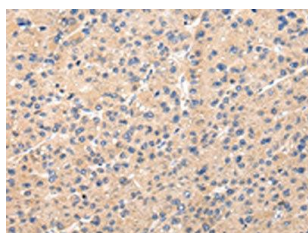
Product Images



The image on the left is immunohistochemistry of paraffin-embedded Human thyroid cancer tissue using PACO17371(PPP5C Antibody) at dilution 1/20, on the right is treated with fusion protein. (Original magnification: x—200).



Gel: 8%SDS-PAGE, Lysate: 40 μ g, Lane: A375 cell, Primary antibody: PACO17371(PPP5C Antibody) at dilution 1/300 dilution, Secondary antibody: Goat anti rabbit IgG at 1/8000 dilution, Exposure time: 30 seconds.



The image on the left is immunohistochemistry of paraffin-embedded Human liver cancer tissue using PACO17371(PPP5C Antibody) at dilution 1/20, on the right is treated with fusion protein. (Original magnification: x—200).