

PACO17390

Product Information

Size:

50ul

Reactivity:

Human, Mouse, Rat

Source:

Rabbit

Isotype:

IgG

Applications:

ELISA, WB, IHC

Recommended dilutions:

ELISA:1:2000-1:10000, WB:1:1000-1:5000,
IHC:1:25-1:100

Protein Background:

This is a component of the ubiquinol-cytochrome c reductase complex (complex III or cytochrome b-c1 complex), which is part of the mitochondrial respiratory chain. The core protein 2 is required for the assembly of the complex.

Gene ID:

UQCRC2

Uniprot

P22695

Synonyms:

ubiquinol-cytochrome c reductase core protein II

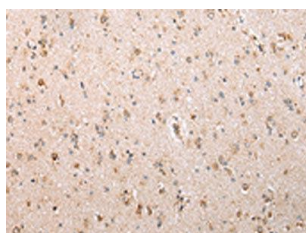
Immunogen:

Fusion protein of human UQCRC2.

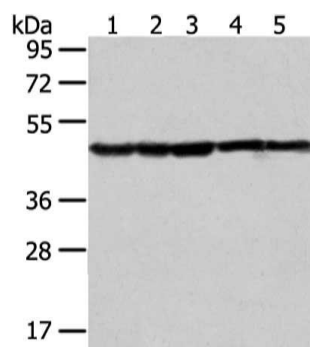
Storage:

-20°C; C, pH7.4 PBS, 0.05% NaN₃, 40% Glycerol

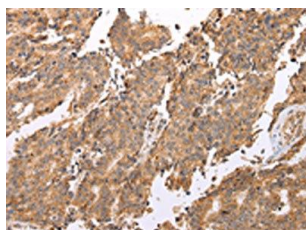
Product Images



The image on the left is immunohistochemistry of paraffin-embedded Human brain tissue using PACO17390(UQCRC2 Antibody) at dilution 1/25, on the right is treated with fusion protein. (Original magnification: x—200).



Gel: 8%SDS-PAGE, Lysate: 40 μ g, Lane 1-5: Jurkat, Raji, hepg2, A431 and HT-29 cell, Primary antibody: PACO17390(UQCRC2 Antibody) at dilution 1/400 dilution, Secondary antibody: Goat anti rabbit IgG at 1/8000 dilution, Exposure time: 10 seconds.



The image on the left is immunohistochemistry of paraffin-embedded Human prostate cancer tissue using PACO17390(UQCRC2 Antibody) at dilution 1/25, on the right is treated with fusion protein. (Original magnification: x—200).