

# APAF1 Antibody



PACO17460

---

## Product Information

**Size:**

50ul

**Reactivity:**

Human, Mouse, Rat

**Source:**

Rabbit

**Isotype:**

IgG

**Applications:**

ELISA, WB, IHC

**Recommended dilutions:**

ELISA:1:2000-1:5000, WB:1:500-1:2000,  
IHC:1:50-1:200

**Protein Background:**

This gene encodes a cytoplasmic protein that initiates apoptosis. This protein contains several copies of the WD-40 domain, a caspase recruitment domain (CARD), and an ATPase domain (NB-ARC). Upon binding cytochrome c and dATP, this protein forms an oligomeric apoptosome. The apoptosome binds and cleaves caspase 9 preproprotein, releasing its mature, activated form. Activated caspase 9 stimulates the subsequent caspase cascade that commits the cell to apoptosis. Alternative splicing results in several transcript variants encoding different isoforms.

**Gene ID:**

APAF1

**Uniprot**

O14727

**Synonyms:**

Apoptotic protease-activating factor 1

**Immunogen:**

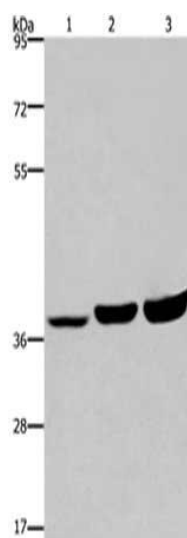
Synthetic peptide of human APAF1.

**Storage:**

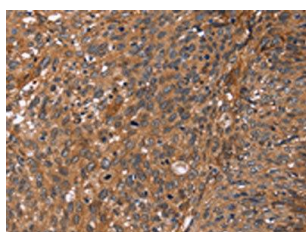
-20&deg; C, pH7.4 PBS, 0.05% NaN<sub>3</sub>, 40% Glycerol

## Product Images

---



Gel: 6%SDS-PAGE, Lysate: 40  $\mu$ g, Lane 1-3: HeLa cells, A549 cells, HUVEC cells, Primary antibody: PACO17460(APAF1 Antibody) at dilution 1/350 dilution, Secondary antibody: Goat anti rabbit IgG at 1/8000 dilution, Exposure time: 20 seconds.



The image on the left is immunohistochemistry of paraffin-embedded Human cervical cancer tissue using PACO17460(APAF1 Antibody) at dilution 1/40, on the right is treated with synthetic peptide. (Original magnification: x—200).