

### Product Information

**Size:**

50ul

**Reactivity:**

Human, Mouse, Rat

**Source:**

Rabbit

**Isotype:**

IgG

**Applications:**

ELISA, IHC

**Recommended dilutions:**

ELISA:1:1000-1:5000, IHC:1:25-1:100

**Protein Background:**

The protein encoded by this gene belongs to the angiotensin-converting enzyme family of dipeptidyl carboxydipeptidases and has considerable homology to human angiotensin 1 converting enzyme. This secreted protein catalyzes the cleavage of angiotensin I into angiotensin 1-9, and angiotensin II into the vasodilator angiotensin 1-7. The organ- and cell-specific expression of this gene suggests that it may play a role in the regulation of cardiovascular and renal function, as well as fertility. In addition, the encoded protein is a functional receptor for the spike glycoprotein of the human coronaviruses SARS and HCoV-NL63.

**Gene ID:**

ACE2

**Uniprot**

Q9BYF1

**Synonyms:**

Angiotensin-converting enzyme 2

**Immunogen:**

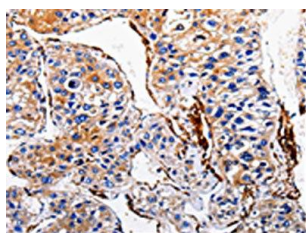
Synthetic peptide of human ACE2.

**Storage:**

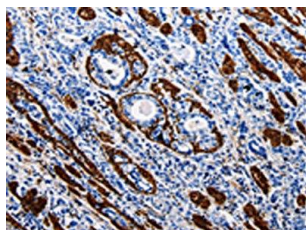
-20&deg; C, pH7.4 PBS, 0.05% NaN3, 40% Glycerol

## Product Images

---



The image is immunohistochemistry of paraffin-embedded Human liver cancer tissue using PACO17482(ACE2 Antibody) at dilution 1/40. (Original magnification: x—200).



The image is immunohistochemistry of paraffin-embedded Human stomach cancer tissue using PACO17482(ACE2 Antibody) at dilution 1/40. (Original magnification: x—200).