

### Product Information

**Size:**

50ul

**Reactivity:**

Human, Mouse

**Source:**

Rabbit

**Isotype:**

IgG

**Applications:**

ELISA, WB

**Recommended dilutions:**

ELISA:1:1000-1:2000, WB:1:200-1:1000

**Protein Background:**

Human thiol dioxygenases include cysteine dioxygenase (CDO, MIM 603943) and cysteamine (2-aminoethanethiol) dioxygenase (ADO, EC 1.13.11.19). CDO adds 2 oxygen atoms to free cysteine, whereas ADO adds 2 oxygen atoms to free cysteamine to form hypotaurine.

**Gene ID:**

ADO

**Uniprot**

Q96SZ5

**Synonyms:**

2-aminoethanethiol dioxygenase

**Immunogen:**

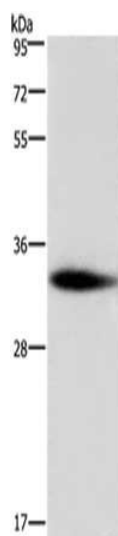
Synthetic peptide of human ADO.

**Storage:**

-20&deg; C, pH7.4 PBS, 0.05% NaN<sub>3</sub>, 40% Glycerol

## Product Images

---



Gel: 8%SDS-PAGE, Lysate: 40  $\mu$ g, Primary antibody: PACO17494(ADO Antibody) at dilution 1/300 dilution, Secondary antibody: Goat anti rabbit IgG at 1/8000 dilution, Exposure time: 5 minutes.