

PACO17496

---

## Product Information

**Size:**

50ul

**Reactivity:**

Human, Mouse, Rat

**Source:**

Rabbit

**Isotype:**

IgG

**Applications:**

ELISA, IHC

**Recommended dilutions:**

ELISA:1:1000-1:5000, IHC:1:25-1:100

**Protein Background:**

The adrenergic receptors (subtypes alpha 1, alpha 2, beta 1, and beta 2) are a prototypic family of guanine nucleotide binding regulatory protein-coupled receptors that mediate the physiological effects of the hormone epinephrine and the neurotransmitter norepinephrine. Specific polymorphisms in this gene have been shown to affect the resting heart rate and can be involved in heart failure.

**Gene ID:**

ADRB1

**Uniprot**

P08588

**Synonyms:**

Beta-1 adrenergic receptor

**Immunogen:**

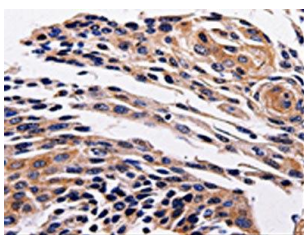
Synthetic peptide of human ADRB1.

**Storage:**

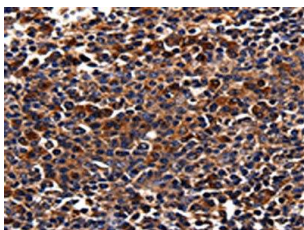
-20&deg; C, pH7.4 PBS, 0.05% NaN<sub>3</sub>, 40% Glycerol

## Product Images

---



The image is immunohistochemistry of paraffin-embedded Human cervical cancer tissue using PACO17496(ADRB1 Antibody) at dilution 1/25. (Original magnification: x—200).



The image is immunohistochemistry of paraffin-embedded Human tonsil cancer tissue using PACO17496(ADRB1 Antibody) at dilution 1/25. (Original magnification: x—200).