

Product Information

Size:

50ul

Reactivity:

Human, Mouse, Rat

Source:

Rabbit

Isotype:

IgG

Applications:

ELISA, IHC

Recommended dilutions:

ELISA:1:1000-1:5000, IHC:1:50-1:200

Protein Background:

This gene encodes a small GTP-binding protein that belongs to the largest family within the Ras superfamily. Rab35 plays an important role in insulin-stimulated GLUT4 translocation in adipocytes. It is the target of TBC1D10A–C and that the intracellular accumulation of endosomal vesicles and impairs exosome secretion were occurred when inhibition of Rab35 function. The surface of oligodendroglia in a GTP-dependent manner was localized Rab35, it increases the density of vesicles, and may have a function in docking or tethering.

Gene ID:

RAB35

Uniprot

Q15286

Synonyms:

Ras-related protein Rab-35

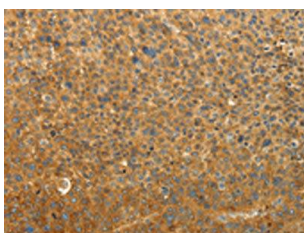
Immunogen:

Synthetic peptide of human RAB35.

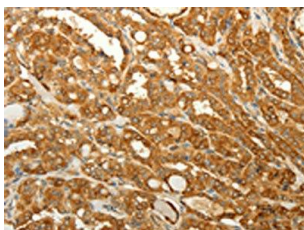
Storage:

-20° C, pH7.4 PBS, 0.05% NaN3, 40% Glycerol

Product Images



The image on the left is immunohistochemistry of paraffin-embedded Human liver cancer tissue using PACO17512(RAB35 Antibody) at dilution 1/50, on the right is treated with synthetic peptide. (Original magnification: x—200).



The image on the left is immunohistochemistry of paraffin-embedded Human thyroid cancer tissue using PACO17512(RAB35 Antibody) at dilution 1/50, on the right is treated with synthetic peptide. (Original magnification: x—200).