

Product Information

Size:

50ul

Reactivity:

Human

Source:

Rabbit

Isotype:

IgG

Applications:

ELISA, IHC

Recommended dilutions:

ELISA:1:2000-1:10000, IHC:1:100-1:200

Protein Background:

This gene encodes a small GTP-binding protein that belongs to the largest family within the Ras superfamily. These proteins function as regulators of membrane trafficking. They cycle between inactive GDP-bound and activated GTP-bound states, which is controlled by GTP hydrolysis-activating proteins (GAPs). This family member can be activated by the GAP protein RN-Tre, and it is localized to the Golgi complex.

Gene ID:

RAB41

Uniprot

Q5JT25

Synonyms:

Ras-related protein Rab-41

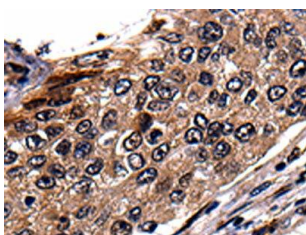
Immunogen:

Synthetic peptide of human RAB41.

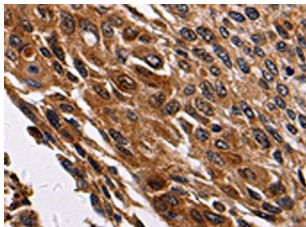
Storage:

-20° C, pH7.4 PBS, 0.05% NaN₃, 40% Glycerol

Product Images



The image is immunohistochemistry of paraffin-embedded Human renal cancer tissue using PACO17517(RAB41 Antibody) at dilution 1/100. (Original magnification: x—200).



The image is immunohistochemistry of paraffin-embedded Human cervical cancer tissue using PACO17517(RAB41 Antibody) at dilution 1/100. (Original magnification: x—200).