

PACO17560

---

## Product Information

**Size:**

50ul

**Reactivity:**

Human, Mouse, Rat

**Source:**

Rabbit

**Isotype:**

IgG

**Applications:**

ELISA, WB

**Recommended dilutions:**

ELISA:1:1000-1:2000, WB:1:200-1:1000

**Protein Background:**

The protein encoded by this gene is a glycogen phosphorylase found predominantly in the brain. The encoded protein forms homodimers which can associate into homotetramers, the enzymatically active form of glycogen phosphorylase. The activity of this enzyme is positively regulated by AMP and negatively regulated by ATP, ADP, and glucose-6-phosphate. This enzyme catalyzes the rate-determining step in glycogen degradation.

**Gene ID:**

PYGB

**Uniprot**

P11216

**Synonyms:**

Phosphorylase, glycogen; brain

**Immunogen:**

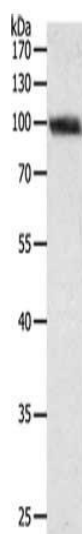
Synthetic peptide of human PYGB.

**Storage:**

-20&deg; C, pH7.4 PBS, 0.05% NaN<sub>3</sub>, 40% Glycerol

## Product Images

---



Gel: 8%SDS-PAGE, Lysate: 40  $\mu$ g, Lane: SKOV3 cells, Primary antibody: PACO17560(PYGB Antibody) at dilution 1/300, Secondary antibody: Goat anti rabbit IgG at 1/8000 dilution, Exposure time: 30 seconds.