
Product Information

Size:

50ul

Reactivity:

Human, Mouse

Source:

Rabbit

Isotype:

IgG

Applications:

ELISA, IHC

Recommended dilutions:

ELISA:1:1000-1:5000, IHC:1:10-1:50

Protein Background:

This gene encodes a protein with a BIR (baculoviral inhibition of apoptosis protein repeat) domain and a UBCc (ubiquitin-conjugating enzyme E2, catalytic) domain. This protein inhibits apoptosis by facilitating the degradation of apoptotic proteins by ubiquitination.

Gene ID:

BIRC6

Uniprot

Q9NR09

Synonyms:

Baculoviral IAP repeat-containing protein 6

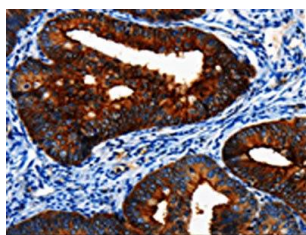
Immunogen:

Synthetic peptide of human BIRC6.

Storage:

-20° C, pH7.4 PBS, 0.05% NaN₃, 40% Glycerol

Product Images



The image on the left is immunohistochemistry of paraffin-embedded Human cervical cancer tissue using PACO17594(BIRC6 Antibody) at dilution 1/7, on the right is treated with synthetic peptide. (Original magnification: x—200).