

# POU2AF1 Antibody



PACO17643

---

## Product Information

**Size:**

50ul

**Reactivity:**

Human, Mouse

**Source:**

Rabbit

**Isotype:**

IgG

**Applications:**

ELISA, IHC

**Recommended dilutions:**

ELISA:1:1000-1:2000, IHC:1:10-1:50

**Protein Background:**

POU domain class 2-associating factor 1 is a protein that in humans is encoded by the POU2AF1 gene. POU2AF1 has been shown to interact with POU2F1 and SIAH1. POU domain class 2-associating factor 1 is a protein that in humans is encoded by the POU2AF1 gene. Transcriptional coactivator that specifically associates with either OCT1 or OCT2. It encourages the OCT1 mediated promoter activity and to a lesser extent, that of OCT2. It has no intrinsic DNA-binding activity. It recognizes the POU domains of OCT1 and OCT2. It is necessary for the response of B-cells to antigens and required for the formation of germinal centers.

**Gene ID:**

POU2AF1

**Uniprot**

Q16633

**Synonyms:**

POU class 2 associating factor 1

**Immunogen:**

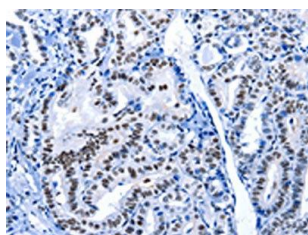
Synthetic peptide of human POU2AF1.

**Storage:**

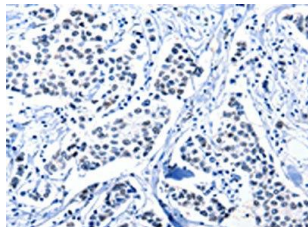
-20&deg; C, pH7.4 PBS, 0.05% NaN3, 40% Glycerol

## Product Images

---



The image on the left is immunohistochemistry of paraffin-embedded Human thyroid cancer tissue using PACO17643(POU2AF1 Antibody) at dilution 1/15, on the right is treated with synthetic peptide. (Original magnification: x—200).



The image on the left is immunohistochemistry of paraffin-embedded Human breast cancer tissue using PACO17643(POU2AF1 Antibody) at dilution 1/15, on the right is treated with synthetic peptide. (Original magnification: x—200).