

Product Information

Size:

50ul

Reactivity:

Human

Source:

Rabbit

Isotype:

IgG

Applications:

ELISA, IHC

Recommended dilutions:

ELISA:1:500-1:5000, IHC:1:10-1:100

Protein Background:

This gene belongs to the chemokine-like factor gene superfamily, a novel family that is similar to the chemokine and the transmembrane 4 superfamilies of signaling molecules. The protein encoded by this gene may play an important role in testicular development. Alternatively spliced transcript variants encoding different isoforms have been identified. Naturally occurring read-through transcription occurs between this locus and the neighboring locus CKLF (chemokine-like factor).

Gene ID:

CMTM1

Uniprot

Q8IZ96

Synonyms:

CKLF-like MARVEL transmembrane domain-containing protein 1

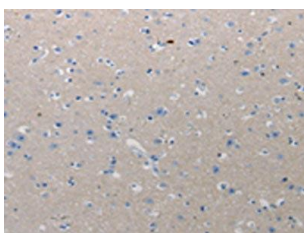
Immunogen:

Synthetic peptide of human CMTM1.

Storage:

-20° C, pH7.4 PBS, 0.05% NaN3, 40% Glycerol

Product Images



The image on the left is immunohistochemistry of paraffin-embedded Human urinary bladder tissue using PACO17706(CMTM1 Antibody) at dilution 1/10, on the right is treated with synthetic peptide. (Original magnification: x—200).