

Product Information

Size:

50ul

Reactivity:

Human, Mouse, Rat

Source:

Rabbit

Isotype:

IgG

Applications:

ELISA, IHC

Recommended dilutions:

ELISA:1:1000-1:5000, IHC:1:25-1:100

Protein Background:

Pleckstrin homology domain-containing family O member 1 is a protein that in humans is encoded by the PLEKHO1 gene. PLEKHO1 has been shown to interact with Casein kinase 2, alpha 1 and SMURF1. It plays a role in the regulation of the actin cytoskeleton through its interactions with actin capping protein (CP). Appears to target ATM to the plasma membrane, and also inhibit tumor cell growth by inhibiting AKT-mediated cell-survival. The protein implicated in PI3K-regulated muscle differentiation, the regulation of AP-1 activity (plasma membrane bound AP-1 regulator that translocates to the nucleus) and the promotion of apoptosis induced by tumor necrosis factor TNF. When bound to PKB, it inhibits it probably by decreasing PKB level of phosphorylation.

Gene ID:

PLEKHO1

Uniprot

Q53GL0

Synonyms:

pleckstrin homology domain containing, family O member 1

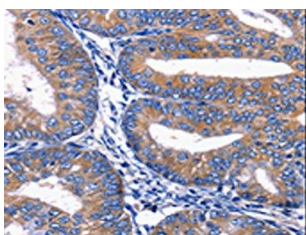
Immunogen:

Synthetic peptide of human PLEKHO1.

Storage:

-20° C, pH7.4 PBS, 0.05% NaN3, 40% Glycerol

Product Images



The image on the left is immunohistochemistry of paraffin-embedded Human cervical cancer tissue using PACO17709(PLEKHO1 Antibody) at dilution 1/20, on the right is treated with synthetic peptide. (Original magnification: x—200).