

Product Information

Size:

50ul

Reactivity:

Human, Mouse, Rat

Source:

Rabbit

Isotype:

IgG

Applications:

ELISA, IHC

Recommended dilutions:

ELISA:1:1000-1:2000, IHC:1:10-1:50

Protein Background:

This gene encodes a member of the claudin family. Claudins are integral membrane proteins and components of tight junction strands. Tight junction strands serve as a physical barrier to prevent solutes and water from passing freely through the paracellular space between epithelial or endothelial cell sheets. Mutations in this gene have been found in patients with velocardiofacial syndrome. Alternatively spliced transcript variants encoding the same protein have been found for this gene.

Gene ID:

CLDN5

Uniprot

O00501

Synonyms:

claudin 5

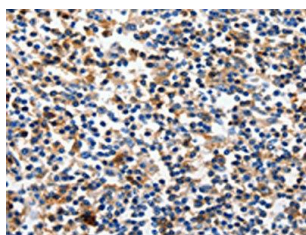
Immunogen:

Synthetic peptide of human CLDN5.

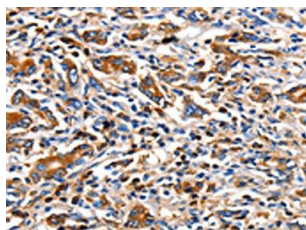
Storage:

-20° C, pH7.4 PBS, 0.05% NaN₃, 40% Glycerol

Product Images



The image on the left is immunohistochemistry of paraffin-embedded Human tonsil tissue using PACO17713 (CLDN5 Antibody) at dilution 1/10, on the right is treated with synthetic peptide. (Original magnification: x—200).



The image on the left is immunohistochemistry of paraffin-embedded Human gastic cancer tissue using PACO17713 (CLDN5 Antibody) at dilution 1/10, on the right is treated with synthetic peptide. (Original magnification: x—200).