

PACO17717

Product Information

Size:

50ul

Reactivity:

Human, Mouse

Source:

Rabbit

Isotype:

IgG

Applications:

ELISA, IHC

Recommended dilutions:

ELISA:1:1000-1:2000, IHC:1:25-1:100

Protein Background:

COX18 encodes a cytochrome c oxidase (COX)-assembly protein. The *S. cerevisiae* Cox18 protein catalyzes the insertion of the Cox2 (MTCO2; MIM 516040) C-terminal tail into the mitochondrial inner membrane, an intermediate step in the assembly of complex IV of the mitochondrial respiratory chain.

Gene ID:

COX18

Uniprot

Q8N8Q8

Synonyms:

COX18 cytochrome C oxidase assembly factor

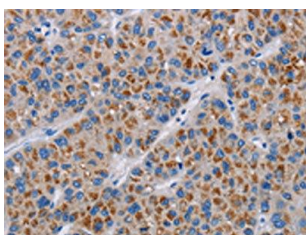
Immunogen:

Synthetic peptide of human COX18.

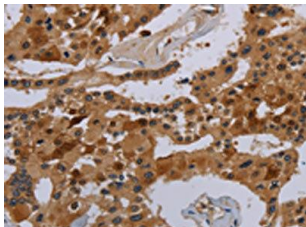
Storage:

-20° C, pH7.4 PBS, 0.05% NaN₃, 40% Glycerol

Product Images



The image on the left is immunohistochemistry of paraffin-embedded Human liver cancer tissue using PACO17717(COX18 Antibody) at dilution 1/20, on the right is treated with synthetic peptide. (Original magnification: x—200).



The image on the left is immunohistochemistry of paraffin-embedded Human prostate cancer tissue using PACO17717(COX18 Antibody) at dilution 1/20, on the right is treated with synthetic peptide. (Original magnification: x—200).