

Product Information

Size:

50ul

Reactivity:

Human, Mouse, Rat

Source:

Rabbit

Isotype:

IgG

Applications:

ELISA, IHC

Recommended dilutions:

ELISA:1:500-1:5000, IHC:1:10-1:50

Protein Background:

The protein encoded by this gene is a nuclear protein which is transported to the mitochondrial inner membrane. Together with carnitine palmitoyltransferase I, the encoded protein oxidizes long-chain fatty acid, in the mitochondria. Defects in this gene are associated with mitochondrial long-chain fatty-acid, (LCFA) oxidation disorders.

Gene ID:

CPT2

Uniprot

P23786

Synonyms:

Carnitine palmitoyltransferase 2

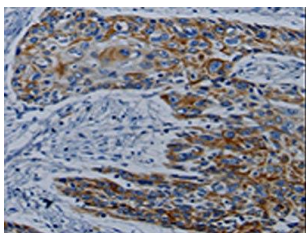
Immunogen:

Synthetic peptide of human CPT2.

Storage:

-20° C, pH7.4 PBS, 0.05% NaN₃, 40% Glycerol

Product Images



The image on the left is immunohistochemistry of paraffin-embedded Human esophagus cancer tissue using PACO17720(CPT2 Antibody) at dilution 1/10, on the right is treated with synthetic peptide. (Original magnification: x—200).