

PACO17724

---

## Product Information

**Size:**

50ul

**Reactivity:**

Human, Mouse, Rat

**Source:**

Rabbit

**Isotype:**

IgG

**Applications:**

ELISA, WB, IHC

**Recommended dilutions:**

ELISA:1:1000-1:5000, WB:1:500-1:1000,  
IHC:1:25-1:100

**Protein Background:**

Collapsin response mediator protein 1, encoded by the CRMP1 gene, is a human protein of the CRMP family. This gene encodes a member of a family of cytosolic phosphoproteins expressed exclusively in the nervous system. The encoded protein is thought to be a part of the semaphorin signal transduction pathway implicated in semaphorin-induced growth cone collapse during neural development. Alternative splicing results in multiple transcript variants. CRMP1 mediates reelin signaling in cortical neuronal migration. Mice deficient in CRMP1 exhibit impaired long-term potentiation and impaired spatial learning and memory. CRMP1 gene overlaps with another gene called EVC. CRMP1 has been shown to interact with DPYSL2.

**Gene ID:**

CRMP1

**Uniprot**

Q14194

**Synonyms:**

collapsin response mediator protein 1

**Immunogen:**

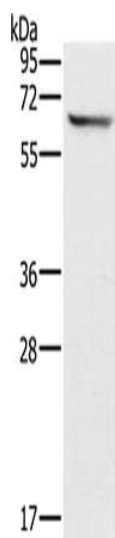
Synthetic peptide of human CRMP1.

**Storage:**

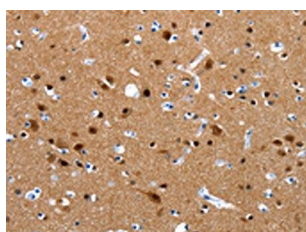
-20&deg; C, pH7.4 PBS, 0.05% NaN<sub>3</sub>, 40% Glycerol

## Product Images

---



Gel: 10%SDS-PAGE, Lysate: 30  $\mu$ g, Lane: Mouse brain tissue, Primary antibody: PACO17724(CRMP1 Antibody) at dilution 1/500, Secondary antibody: Goat anti rabbit IgG at 1/8000 dilution, Exposure time: 20 seconds.



The image on the left is immunohistochemistry of paraffin-embedded Human brain tissue using PACO17724(CRMP1 Antibody) at dilution 1/15, on the right is treated with synthetic peptide. (Original magnification: x—200).