

PACO17771

Product Information

Size:

50ul

Reactivity:

Human

Source:

Rabbit

Isotype:

IgG

Applications:

ELISA, WB, IHC

Recommended dilutions:

ELISA:1:500-1:5000, WB:1:1000-1:5000,
IHC:1:25-1:100

Protein Background:

This gene encodes the D1 subtype of the dopamine receptor. The D1 subtype is the most abundant dopamine receptor in the central nervous system. This G-protein coupled receptor stimulates adenylyl cyclase and activates cyclic AMP-dependent protein kinases. D1 receptors regulate neuronal growth and development, mediate some behavioral responses, and modulate dopamine receptor D2-mediated events. Alternate transcription initiation sites result in two transcript variants of this gene.

Gene ID:

DRD1

Uniprot

P21728

Synonyms:

Dopamine receptor D1

Immunogen:

Synthetic peptide of human DRD1.

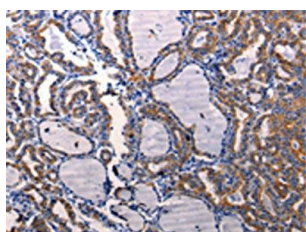
Storage:

-20° C, pH7.4 PBS, 0.05% NaN₃, 40% Glycerol

Product Images



Gel: 10%SDS-PAGE, Lysate: 30 μ g, Lane: HeLa cells, Primary antibody: PACO17771(DRD1 Antibody) at dilution 1/1000, Secondary antibody: Goat anti rabbit IgG at 1/8000 dilution, Exposure time: 1 minute.



The image on the left is immunohistochemistry of paraffin-embedded Human thyroid cancer tissue using PACO17771(DRD1 Antibody) at dilution 1/50, on the right is treated with synthetic peptide. (Original magnification: x—200).