

### Product Information

**Size:**

50ul

**Reactivity:**

Human

**Source:**

Rabbit

**Isotype:**

IgG

**Applications:**

ELISA, WB, IHC

**Recommended dilutions:**

ELISA:1:2000-1:5000, WB:1:500-1:2000,  
IHC:1:25-1:100

**Protein Background:**

This gene encodes a member of the high-affinity glutamate transporters that play an essential role in transporting glutamate across plasma membranes. In brain, these transporters are crucial in terminating the postsynaptic action of the neurotransmitter glutamate, and in maintaining extracellular glutamate concentrations below neurotoxic levels. This transporter also transports aspartate, and mutations in this gene are thought to cause dicarboxylic amino aciduria, also known as glutamate-aspartate transport defect.

**Gene ID:**

SLC1A1

**Uniprot**

P43005

**Synonyms:**

solute carrier family 1 (neuronal/epithelial high affinity glutamate transporter, system Xag), member 1

**Immunogen:**

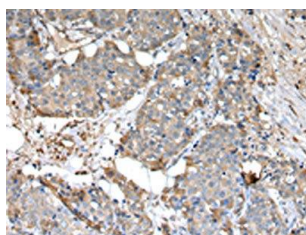
Synthetic peptide of human SLC1A1.

**Storage:**

-20°C; C, pH7.4 PBS, 0.05% Na<sub>3</sub>N, 40% Glycerol

## Product Images

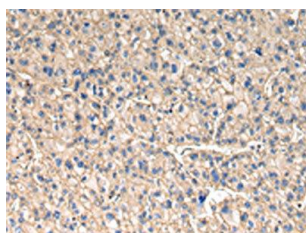
---



The image on the left is immunohistochemistry of paraffin-embedded Human breast cancer tissue using PACO17809(SLC1A1 Antibody) at dilution 1/30, on the right is treated with synthetic peptide. (Original magnification: x—200).



Gel: 8%SDS-PAGE, Lysate: 40 &mu; g, Lane 1-2: Human placenta tissue and normal liver tissue, Primary antibody: PACO17809(SLC1A1 Antibody) at dilution 1/400 dilution, Secondary antibody: Goat anti rabbit IgG at 1/8000 dilution, Exposure time: 4 minutes.



The image on the left is immunohistochemistry of paraffin-embedded Human liver cancer tissue using PACO17809(SLC1A1 Antibody) at dilution 1/30, on the right is treated with synthetic peptide. (Original magnification: x—200).