

SLC1A6 Antibody



PACO17810

Product Information

Size:

50ul

Reactivity:

Human, Mouse, Rat

Source:

Rabbit

Isotype:

IgG

Applications:

ELISA, WB, IHC

Recommended dilutions:

ELISA:1:500-1:5000, WB:1:500-1:1000,
IHC:1:25-1:100

Protein Background:

Excitatory amino-acid, transporter 4 (EAAT4) is a protein that in humans is encoded by the SLC1A6 gene. It is a member of the high-affinity glutamate and neutral amino acid, transporter family. It transports L-glutamate and also L- and D-aspartate predominantly in the cerebellar cortex. Genetic polymorphism in the SLC1A6 gene is suggested to be referred to glutamatergic dysfunction in schizophrenia pathogenesis.

Gene ID:

SLC1A6

Uniprot

P48664

Synonyms:

Solute carrier family 1 member 6

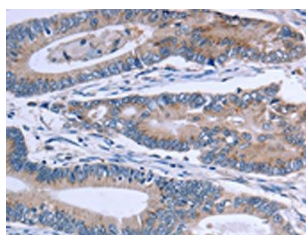
Immunogen:

Synthetic peptide of human SLC1A6.

Storage:

-20° C, pH7.4 PBS, 0.05% NaN₃, 40% Glycerol

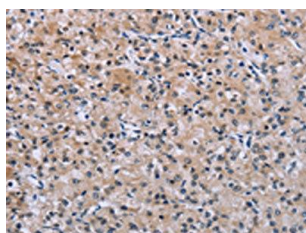
Product Images



The image on the left is immunohistochemistry of paraffin-embedded Human colon cancer tissue using PACO17810(SLC1A6 Antibody) at dilution 1/40, on the right is treated with synthetic peptide. (Original magnification: x—200).



Gel: 10%SDS-PAGE, Lysate: 30 μ g, Lane: Mouse brain tissue, Primary antibody: PACO17810(SLC1A6 Antibody) at dilution 1/600, Secondary antibody: Goat anti rabbit IgG at 1/8000 dilution, Exposure time: 1 minute.



The image on the left is immunohistochemistry of paraffin-embedded Human prostate cancer tissue using PACO17810(SLC1A6 Antibody) at dilution 1/40, on the right is treated with synthetic peptide. (Original magnification: x—200).