

---

## Product Information

**Size:**

50ul

**Reactivity:**

Human

**Source:**

Rabbit

**Isotype:**

IgG

**Applications:**

ELISA, IHC

**Recommended dilutions:**

ELISA:1:1000-1:2000, IHC:1:25-1:100

**Protein Background:**

ECRG4 (esophageal cancer-related gene 4 protein), also known as augurin or C2orf40, is a 148 amino acid, secreted protein. Belonging to the augurin family, ECRG4 is thought to be a hormone. It has also been suggested that ECRG4 may act as a tumor suppressor. The gene that encodes ECRG4 maps to human chromosome 2, which consists of 237 million bases encoding over 1,400 genes, making up approximately 8% of the human genome. A number of genetic diseases are linked to genes on chromosome 2. Harlequin ichthyosis, a rare and morbid skin deformity, is associated with mutations in the ABCA12 gene.

**Gene ID:**

C2orf40

**Uniprot**

Q9H1Z8

**Synonyms:**

chromosome 2 open reading frame 40

**Immunogen:**

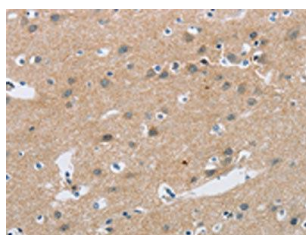
Synthetic peptide of human C2orf40.

**Storage:**

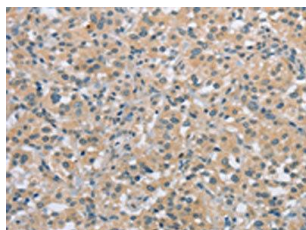
-20&deg; C, pH7.4 PBS, 0.05% NaN<sub>3</sub>, 40% Glycerol

## Product Images

---



The image on the left is immunohistochemistry of paraffin-embedded Human brain tissue using PACO17812(C2orf40 Antibody) at dilution 1/20, on the right is treated with synthetic peptide. (Original magnification: x—200).



The image on the left is immunohistochemistry of paraffin-embedded Human thyroid cancer tissue using PACO17812(C2orf40 Antibody) at dilution 1/20, on the right is treated with synthetic peptide. (Original magnification: x—200).