

# MAPK3 Antibody



PACO17844

---

## Product Information

**Size:**

50ul

**Reactivity:**

Human

**Source:**

Rabbit

**Isotype:**

IgG

**Applications:**

ELISA, WB, IHC

**Recommended dilutions:**

ELISA:1:1000-1:2000, WB:1:200-1:1000,  
IHC:1:15-1:50

**Protein Background:**

The protein encoded by this gene is a member of the MAP kinase family. MAP kinases, also known as extracellular signal-regulated kinases (ERKs), act in a signaling cascade that regulates various cellular processes such as proliferation, differentiation, and cell cycle progression in response to a variety of extracellular signals. This kinase is activated by upstream kinases, resulting in its translocation to the nucleus where it phosphorylates nuclear targets. Alternatively spliced transcript variants encoding different protein isoforms have been described.

**Gene ID:**

MAPK3

**Uniprot**

P27361

**Synonyms:**

mitogen-activated protein kinase 3

**Immunogen:**

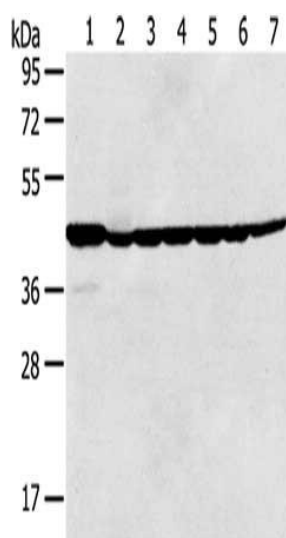
Synthetic peptide of human MAPK3.

**Storage:**

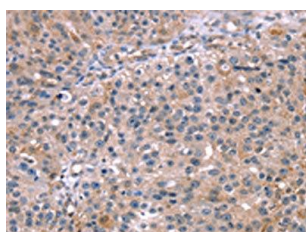
-20°C, pH7.4 PBS, 0.05% NaN3, 40% Glycerol

## Product Images

---



Gel: 10%SDS-PAGE, Lysate: 30  $\mu$ g, Lane 1-2: Human liver cancer tissue, 231 cells, Primary antibody: PACO17844(MAPK3 Antibody) at dilution 1/250, Secondary antibody: Goat anti rabbit IgG at 1/8000 dilution, Exposure time: 5 minutes.



The image on the left is immunohistochemistry of paraffin-embedded Human lung cancer tissue using PACO17844(MAPK3 Antibody) at dilution 1/15, on the right is treated with synthetic peptide. (Original magnification: x—200).