

FOXD2 Antibody



PACO17887

Product Information

Size:

50ul

Reactivity:

Human, Mouse

Source:

Rabbit

Isotype:

IgG

Applications:

ELISA, IHC

Recommended dilutions:

ELISA:1:1000-1:2000, IHC:1:15-1:50

Protein Background:

This gene belongs to the forkhead family of transcription factors which is characterized by a distinct forkhead domain. FOX (Forkhead box) proteins are a family of transcription factors that play important roles in regulating the expression of genes involved in cell growth, proliferation, differentiation, and longevity. Many FOX proteins are important to embryonic development.

Gene ID:

FOXD2

Uniprot

O60548

Synonyms:

forkhead box D2

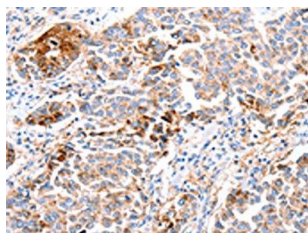
Immunogen:

Synthetic peptide of human FOXD2.

Storage:

-20° C, pH7.4 PBS, 0.05% NaN3, 40% Glycerol

Product Images



The image on the left is immunohistochemistry of paraffin-embedded Human breast cancer tissue using PACO17887(FOXD2 Antibody) at dilution 1/10, on the right is treated with synthetic peptide. (Original magnification: x—200).