

PACO17952

---

## Product Information

**Size:**

50ul

**Reactivity:**

Human, Mouse

**Source:**

Rabbit

**Isotype:**

IgG

**Applications:**

ELISA, WB, IHC

**Recommended dilutions:**

ELISA:1:1000-1:10000, WB:1:500-1:2000,  
IHC:1:25-1:100

**Protein Background:**

Claudin 4, also known as CLDN4, is a protein which in humans is encoded by the CLDN4 gene. It belongs to the group of claudins. This gene encodes an integral membrane protein, which belongs to the claudin family. The protein is a component of tight junction strands and may play a role in internal organ development and function during pre- and postnatal life. This gene is deleted in Williams-Beuren syndrome, a neurodevelopmental disorder affecting multiple systems.

**Gene ID:**

CLDN4

**Uniprot**

O14493

**Synonyms:**

claudin 4

**Immunogen:**

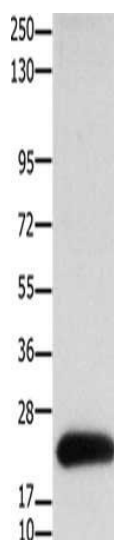
Synthetic peptide of human CLDN4.

**Storage:**

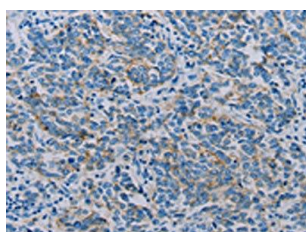
-20&deg; C, pH7.4 PBS, 0.05% NaN<sub>3</sub>, 40% Glycerol

## Product Images

---



Gel: 10+12%SDS-PAGE, Lysate: 30  $\mu$ g, Lane: HT29 cells, Primary antibody: PACO17952(CLDN4 Antibody) at dilution 1/700, Secondary antibody: Goat anti rabbit IgG at 1/8000 dilution, Exposure time: 30 seconds.



The image on the left is immunohistochemistry of paraffin-embedded Human breast cancer tissue using PACO17952(CLDN4 Antibody) at dilution 1/35, on the right is treated with synthetic peptide. (Original magnification: x—200).