

PACO18003

---

## Product Information

**Size:**

50ul

**Reactivity:**

Human

**Source:**

Rabbit

**Isotype:**

IgG

**Applications:**

ELISA, IHC

**Recommended dilutions:**

ELISA:1:1000-1:2000, IHC:1:15-1:50

**Protein Background:**

GLUT5 is a fructose transporter expressed on the apical border of enterocytes in the small intestine. GLUT5 allows for fructose to be transported from the intestinal lumen into the enterocyte by facilitated diffusion due to fructose's high concentration in the intestinal lumen. GLUT5 is also expressed in skeletal muscle, testis, kidney, fat tissue, and brain. Fructose malabsorption or Dietary Fructose Intolerance is a dietary disability of the small intestine, where the amount of fructose carrier in enterocytes is deficient. In humans the GLUT5 protein is encoded by the SLC2A5 gene.

**Gene ID:**

SLC2A5

**Uniprot**

P22732

**Synonyms:**

solute carrier family 2 (facilitated glucose/fructose transporter), member 5

**Immunogen:**

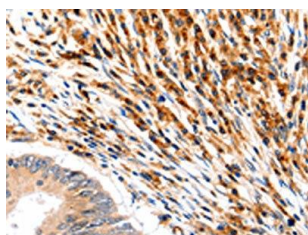
Synthetic peptide of human SLC2A5.

**Storage:**

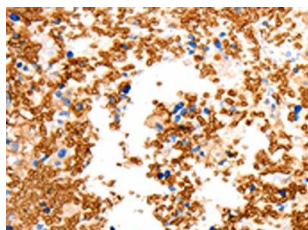
-20°C, pH7.4 PBS, 0.05% NaN3, 40% Glycerol

## Product Images

---



The image on the left is immunohistochemistry of paraffin-embedded Human colon cancer tissue using PACO18003(SLC2A5 Antibody) at dilution 1/12, on the right is treated with synthetic peptide. (Original magnification: x—200).



The image on the left is immunohistochemistry of paraffin-embedded Human ovarian cancer tissue using PACO18003(SLC2A5 Antibody) at dilution 1/12, on the right is treated with synthetic peptide. (Original magnification: x—200).