

SLC2A12 Antibody



PACO18006

Product Information

Size:

50ul

Reactivity:

Human

Source:

Rabbit

Isotype:

IgG

Applications:

ELISA, IHC

Recommended dilutions:

ELISA:1:1000-1:2000, IHC:1:50-1:100

Protein Background:

Solute carrier family 2, facilitated glucose transporter member 12 is a protein that in humans is encoded by the SLC2A12 gene. SLC2A12 belongs to a family of transporters that catalyze the uptake of sugars through facilitated diffusion. This family of transporters show conservation of 12 transmembrane helices as well as functionally significant amino acid residues.

Gene ID:

SLC2A12

Uniprot

Q8TD20

Synonyms:

solute carrier family 2 (facilitated glucose transporter), member 12

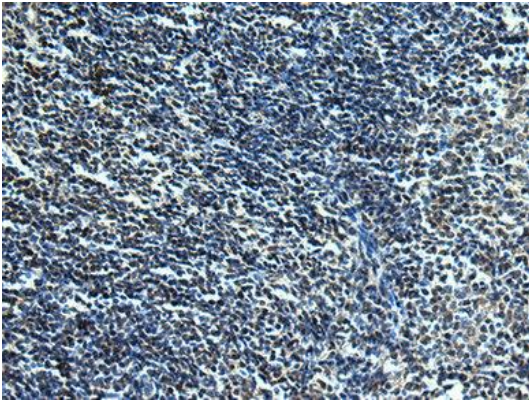
Immunogen:

Synthetic peptide of human SLC2A12.

Storage:

-20° C, pH7.4 PBS, 0.05% NaN₃, 40% Glycerol

Product Images



The image is immunohistochemistry of paraffin-embedded Human tonsil tissue using PACO18006 at dilution 1/30. (Original magnification: x—200).