

ADRBK1 Antibody



PACO18036

Product Information

Size:

50ul

Reactivity:

Human, Mouse, Rat

Source:

Rabbit

Isotype:

IgG

Applications:

ELISA, IHC

Recommended dilutions:

ELISA:1:1000-1:10000, IHC:1:100-1:300

Protein Background:

The product of this gene phosphorylates the beta-2-adrenergic receptor and appears to mediate agonist-specific desensitization observed at high agonist concentrations. This protein is an ubiquitous cytosolic enzyme that specifically phosphorylates the activated form of the beta-adrenergic and related G-protein-coupled receptors. Abnormal coupling of beta-adrenergic receptor to G protein is involved in the pathogenesis of the failing heart.

Gene ID:

GRK2

Uniprot

P25098

Synonyms:

adrenergic, beta, receptor kinase 1

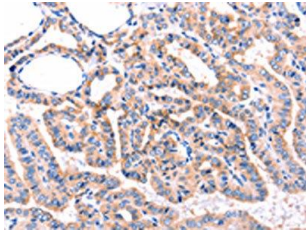
Immunogen:

Synthetic peptide of human ADRBK1.

Storage:

-20° C, pH7.4 PBS, 0.05% NaN₃, 40% Glycerol

Product Images



The image on the left is immunohistochemistry of paraffin-embedded Human thyroid cancer tissue using PACO18036(ADRBK1 Antibody) at dilution 1/87, on the right is treated with synthetic peptide. (Original magnification: x—200).