

Product Information

Size:

50ul

Reactivity:

Human

Source:

Rabbit

Isotype:

IgG

Applications:

ELISA, WB, IHC

Recommended dilutions:

ELISA:1:1000-1:2000, WB:1:200-1:1000,
IHC:1:5-1:20

Protein Background:

This gene encodes a member of the GTP cyclohydrolase family. The encoded protein is the first and rate-limiting enzyme in tetrahydrobiopterin (BH4) biosynthesis, catalyzing the conversion of GTP into 7,8-dihydroneopterin triphosphate. BH4 is an essential cofactor required by aromatic amino acid, hydroxylases as well as nitric oxide synthases. Mutations in this gene are associated with malignant hyperphenylalaninemia and dopa-responsive dystonia. Several alternatively spliced transcript variants encoding different isoforms have been described; however, not all variants give rise to a functional enzyme.

Gene ID:

GCH1

Uniprot

P30793

Synonyms:

GTP cyclohydrolase 1

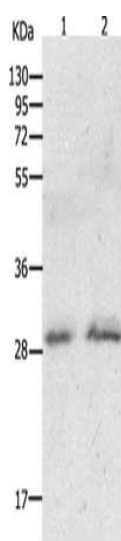
Immunogen:

Synthetic peptide of human GCH1.

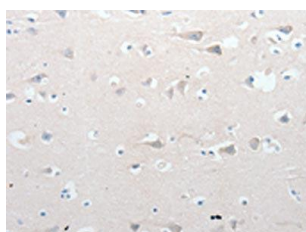
Storage:

-20° C, pH7.4 PBS, 0.05% NaN₃, 40% Glycerol

Product Images



Gel: 12%SDS-PAGE, Lysate: 60 μ g, Lane 1-2: Human fetal liver tissue, hela cells, Primary antibody: PACO18041(GCH1 Antibody) at dilution 1/200, Secondary antibody: Goat anti rabbit IgG at 1/8000 dilution, Exposure time: 15 minutes.



The image on the left is immunohistochemistry of paraffin-embedded Human brain tissue using PACO18041(GCH1 Antibody) at dilution 1/15, on the right is treated with synthetic peptide. (Original magnification: x—200).