

# HMGB1 Antibody



PACO18068

---

## Product Information

**Size:**

50ul

**Reactivity:**

Human, Mouse, Rat

**Source:**

Rabbit

**Isotype:**

IgG

**Applications:**

ELISA, IHC

**Recommended dilutions:**

ELISA:1:1000-1:2000, IHC:1:10-1:50

**Protein Background:**

DNA binding proteins that associates with chromatin and has the ability to bend DNA. Binds preferentially single-stranded DNA. Involved in V(D)J recombination by acting as a cofactor of the RAG complex. Acts by stimulating cleavage and RAG protein binding at the 23 bp spacer of conserved recombination signal sequences (RSS). Heparin-binding protein that has a role in the extension of neurite-type cytoplasmic processes in developing cells.

**Gene ID:**

HMGB1

**Uniprot**

P09429

**Synonyms:**

high mobility group box 1

**Immunogen:**

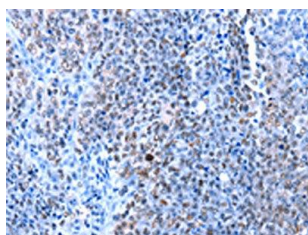
Synthetic peptide of human HMGB1.

**Storage:**

-20&deg; C, pH7.4 PBS, 0.05% NaN3, 40% Glycerol

## Product Images

---



The image on the left is immunohistochemistry of paraffin-embedded Human ovarian cancer tissue using PACO18068(HMGB1 Antibody) at dilution 1/13, on the right is treated with synthetic peptide. (Original magnification: x—200).