

PACO18108

Product Information

Size:

50ul

Reactivity:

Human, Mouse

Source:

Rabbit

Isotype:

IgG

Applications:

ELISA, WB, IHC

Recommended dilutions:

ELISA:1:1000-1:2000, WB:1:200-1:1000,
IHC:1:30-1:150

Protein Background:

This gene encodes a member of the IQGAP family. The protein contains three IQ domains, one calponin homology domain, one Ras-GAP domain and one WW domain. It interacts with components of the cytoskeleton, with cell adhesion molecules, and with several signaling molecules to regulate cell morphology and motility.

Gene ID:

IQGAP2

Uniprot

Q13576

Synonyms:

IQ motif containing GTPase activating protein 2

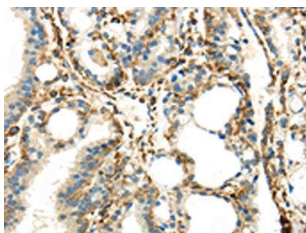
Immunogen:

Synthetic peptide of human IQGAP2.

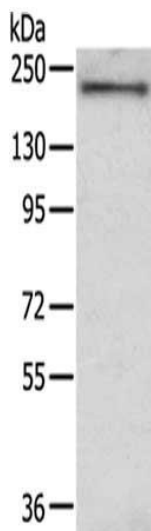
Storage:

-20° C, pH7.4 PBS, 0.05% NaN₃, 40% Glycerol

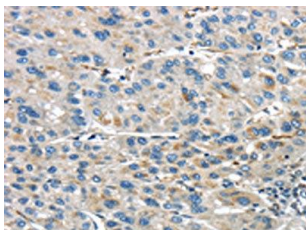
Product Images



The image on the left is immunohistochemistry of paraffin-embedded Human thyroid cancer tissue using PACO18108(IQGAP2 Antibody) at dilution 1/45, on the right is treated with synthetic peptide. (Original magnification: x—200).



Gel: 6%SDS-PAGE, Lysate: 40 μ g, Primary antibody: PACO18108(IQGAP2 Antibody) at dilution 1/350 dilution, Secondary antibody: Goat anti rabbit IgG at 1/8000 dilution, Exposure time: 20 seconds.



The image on the left is immunohistochemistry of paraffin-embedded Human liver cancer tissue using PACO18108(IQGAP2 Antibody) at dilution 1/45, on the right is treated with synthetic peptide. (Original magnification: x—200).