

PACO18143

Product Information

Size:

50ul

Reactivity:

Human, Mouse

Source:

Rabbit

Isotype:

IgG

Applications:

ELISA, WB

Recommended dilutions:

ELISA:1:1000-1:2000, WB:1:200-1:1000

Protein Background:

Layilin is a recently cloned ~55-kDa membrane-binding partner for talin (Borowsky and Hynes, 1998) that is widely expressed in different cell types and tissue extracts. It is found in peripheral ruffles of spreading cells and is recruited to membrane ruffles in cells induced to migrate in in vitro wounding experiments. Layilin colocalizes with talin in ruffles and binds to talin's ~50-kDa head domain (amino acid, 280–435). Other parts of talin (the ~220-kDa tail fragment) can bind beta -integrin cytoplasmic tails, vinculin, and F-actin and hence form an integrin-cytoskeleton linkage at sites of cell-substratum contact. Layilin's extracellular domain is homologous with the carbohydrate-recognition domains (CRD) of C-type lectins.

Gene ID:

LAYN

Uniprot

Q6UX15

Synonyms:

layilin

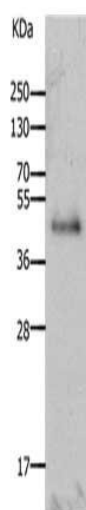
Immunogen:

Synthetic peptide of human LAYN.

Storage:

-20°C, pH7.4 PBS, 0.05% NaN₃, 40% Glycerol

Product Images



Gel: 10%SDS-PAGE, Lysate: 40 μ g, Lane: Mouse brain tissue, Primary antibody: PACO18143(LAYN Antibody) at dilution 1/350, Secondary antibody: Goat anti rabbit IgG at 1/8000 dilution, Exposure time: 1 minute.