

Product Information

Size:

50ul

Reactivity:

Human

Source:

Rabbit

Isotype:

IgG

Applications:

ELISA, IHC

Recommended dilutions:

ELISA:1:1000-1:2000, IHC:1:25-1:100

Protein Background:

The protein encoded by this gene is a member of the immunoglobulin superfamily. It was identified by its similarity to LAIR1, an inhibitory receptor present on mononuclear leukocytes. This gene maps to a region of 19q13.4, termed the leukocyte receptor cluster, which contains 29 genes in the immunoglobulin superfamily, including LAIR1. The function of this protein is unknown, although it is thought to be secreted and may help modulate mucosal tolerance. Two transcript variants encoding different isoforms have been found for this gene.

Gene ID:

LAIR2

Uniprot

Q6ISS4

Synonyms:

leukocyte-associated immunoglobulin-like receptor 2

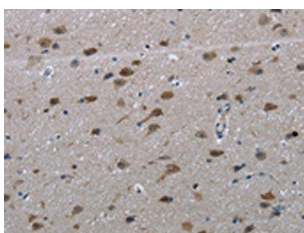
Immunogen:

Synthetic peptide of human LAIR2.

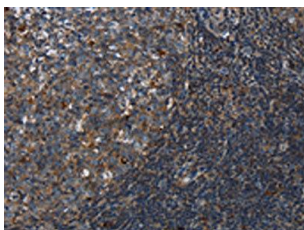
Storage:

-20° C, pH7.4 PBS, 0.05% NaN3, 40% Glycerol

Product Images



The image on the left is immunohistochemistry of paraffin-embedded Human brain tissue using PACO18145(LAIR2 Antibody) at dilution 1/20, on the right is treated with synthetic peptide. (Original magnification: x—200).



The image on the left is immunohistochemistry of paraffin-embedded Human tonsil tissue using PACO18145(LAIR2 Antibody) at dilution 1/20, on the right is treated with synthetic peptide. (Original magnification: x—200).