

BPIFB1 Antibody



PACO18159

Product Information

Size:

50ul

Reactivity:

Human

Source:

Rabbit

Isotype:

IgG

Applications:

ELISA, WB, IHC

Recommended dilutions:

ELISA:1:1000-1:5000, WB:1:500-1:2000,
IHC:1:25-1:100

Protein Background:

The protein encoded by this gene may be involved in the innate immune response to bacterial exposure in the mouth, nasal cavities, and lungs. The encoded protein is secreted and is a member of the BPI/LBP/PLUNC protein superfamily. This gene is found with other members of the superfamily in a cluster on chromosome 20.

Gene ID:

BPIFB1

Uniprot

Q8TDL5

Synonyms:

BPI fold containing family B, member 1

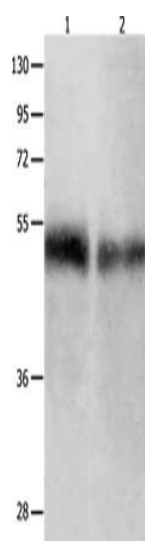
Immunogen:

Synthetic peptide of human BPIFB1.

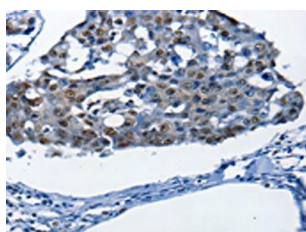
Storage:

-20° C, pH7.4 PBS, 0.05% NaN₃, 40% Glycerol

Product Images



Gel: 10%SDS-PAGE, Lysate: 50 μ g, Lane 1-2: Human tongue tissue, Human laryngocarcinoma tissue, Primary antibody: PACO18159(BPIFB1 Antibody) at dilution 1/500, Secondary antibody: Goat anti rabbit IgG at 1/8000 dilution, Exposure time: 1 minute.



The image on the left is immunohistochemistry of paraffin-embedded Human breast cancer tissue using PACO18159(BPIFB1 Antibody) at dilution 1/25, on the right is treated with synthetic peptide. (Original magnification: x—200).